

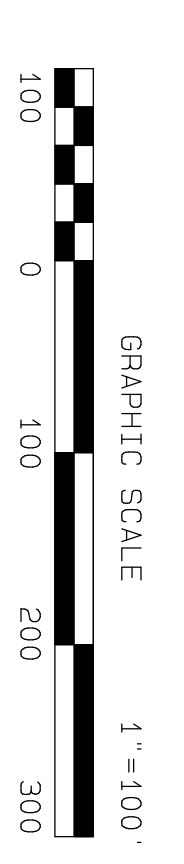
LINE	BEARING	DISTANCE
L1	N08°32'13"E	20.32'
L2	N08°32'13"E	2.35'
L3	N08°32'13"E	16.91'
L4	S37°43'27"E	0.43'
L5	S47°20'59"E	71.54'
L6	N69°29'04"E	51.30'

LINE	DELTA	RADIUS	ARC	TANGENT	CHORD	CHORD BEARING
C1	48°45'00"	150.00'	127.63'	67.96'	123.81'	N32°12'08"E
C2	40°30'00"	150.00'	106.03'	58.34'	103.84'	S76°49'38"W
C3	41°57'35"	150.00'	109.85'	57.52'	107.41'	N12°26'34"W
C4	41°15'00"	150.00'	107.99'	56.46'	105.68'	N12°47'52"W
C5	90°00'00"	25.00'	39.27'	25.00'	35.36'	S82°49'38"W
C6	90°00'00"	25.00'	39.27'	25.00'	35.36'	S37°10'22"E
C7	90°00'00"	25.00'	39.27'	25.00'	35.36'	N37°10'22"E
C8	90°00'00"	25.00'	39.27'	25.00'	35.36'	N52°49'38"E
C9	90°00'00"	25.00'	39.27'	25.00'	35.36'	S37°10'22"E
C10	90°00'00"	25.00'	39.27'	25.00'	35.36'	S52°49'38"W
C11	46°34'03"	30.00'	24.38'	19.91'	23.72'	S88°53'21"E
C12	270°31'32"	50.00'	6.16'	3.08'	6.15'	N39°07'58"W
C13	89°07'29"	50.00'	77.78'	49.24'	70.17'	N87°11'17"W
C14	85°56'26"	50.00'	75.00'	46.88'	68.16'	S05°14'46"W
C15	46°15'40"	30.00'	24.22'	12.82'	24.22'	N14°35'37"W
C16	89°17'29"	30.00'	46.75'	29.63'	42.16'	N53°10'56"E
C17	12°46'45"	175.00'	39.03'	19.60'	38.95'	S02°08'51"W
C18	41°57'35"	25.00'	47.93'	91.54'	47.93'	S12°26'34"E
C19	90°00'00"	25.00'	39.27'	25.00'	35.36'	S78°25'22"E
C20	90°00'00"	25.00'	39.27'	25.00'	35.36'	N11°34'38"E
C21	40°30'00"	125.00'	88.36'	46.11'	88.53'	S76°49'38"W
C22	40°30'00"	125.00'	123.70'	64.56'	121.14'	N26°49'38"E
C23	90°00'00"	25.00'	39.27'	25.00'	35.36'	N11°34'38"E
C24	90°00'00"	25.00'	39.27'	25.00'	35.36'	S28°25'22"E
C25	4°01'56"	175.00'	12.30'	6.15'	12.30'	S31°24'34"E
C26	22°47'04"	175.00'	69.58'	35.96'	69.13'	S18°00'14"E
C27	44°26'20"	125.00'	44.10'	22.17'	43.98'	S07°36'28"W
C28	90°00'00"	25.00'	39.27'	25.00'	35.36'	N52°49'38"E
C29	90°00'00"	25.00'	39.27'	25.00'	35.36'	N37°10'22"E
C30	48°11'23"	25.00'	21.03'	11.18'	20.41'	S58°04'41"E
C31	103°21'40"	50.00'	63.27'	78.46'	58.59'49"E	S02°08'51"W
C32	87°54'01"	50.00'	76.71'	48.20'	69.40'	N01°17'40"W
C33	85°07'05"	50.00'	74.28'	45.91'	67.63'	N87°48'13"W
C34	33°46'56"	25.00'	14.74'	7.59'	14.53'	S66°31'43"W
C35	14°24'27"	25.00'	6.29'	3.16'	6.27'	S89°22'36"E
C36	48°45'00"	125.00'	106.36'	56.64'	103.18'	N32°12'08"E
C37	1°47'34"	125.00'	3.91'	1.96'	3.91'	S08°43'25"W
C38	48°45'00"	125.00'	148.90'	79.29'	144.45'	S32°12'08"W
C39	53°58'30"	125.00'	12.31'	6.16'	12.31'	S30°36'07"E
C40	35°56'30"	125.00'	77.68'	40.14'	76.44'	N09°58'37"W
C41	90°00'00"	25.00'	39.27'	25.00'	35.36'	S37°10'22"E
C42	90°00'00"	25.00'	39.27'	25.00'	35.36'	N52°49'38"E
C43	90°00'00"	25.00'	39.27'	25.00'	35.36'	S37°10'22"E
C44	90°00'00"	25.00'	39.27'	25.00'	35.36'	N52°49'38"E

DEVELOPER:  
 PFMT HOLDINGS, LLC  
 5909 SHELBY OAKS DR.  
 MEMPHIS, TN, 38134

OWNER:  
 WILLIAM TRAVIS CORCORAN  
 P. O. BOX 231  
 TIPTON, TN, 38071  
 BK 1776 PG 829

GENERAL NOTES AND CONDITIONS:  
 THERE IS A15' UTILITY EASEMENT ALONG THE FRONT OF ALL LOTS IN THIS SUBDIVISION UNLESS OTHERWISE NOTED.  
 ALL STORMWATER RETENTION AREAS WILL BE MAINTAINED BY HOMEOWNERS ASSOCIATION. ANY ALTERATIONS TO THE RETENTION POND SHALL BE APPROVED BY THE TOWN OF ATOKA.  
 UNDERGROUND ELECTRIC REQUIRED.  
 SIDEWALKS REQUIRED AND TO BE CONSTRUCTED BY THE HOMEOWNER.  
 A PORTION OF THE SUBJECT PROPERTY IS LOCATED IN A FLOOD HAZARD AREA ZONE "A" PER FEMA MAP NO. 4716C0319C EFFECTIVE DATE MAY 04, 2009.  
 STIEG SYSTEM SHALL BE USED FOR SEWAGE DISPOSAL.  
 STORM WATER DETENTION AREA TO BE MAINTAINED BY HOMEOWNERS ASSOCIATION.  
 THE INTENT IS TO DEVELOP ALL LOTS AT THE SAME TIME, BUT AT MOST TWO PHASES.  
 ENTIRE SITE COVERED IN TREES.

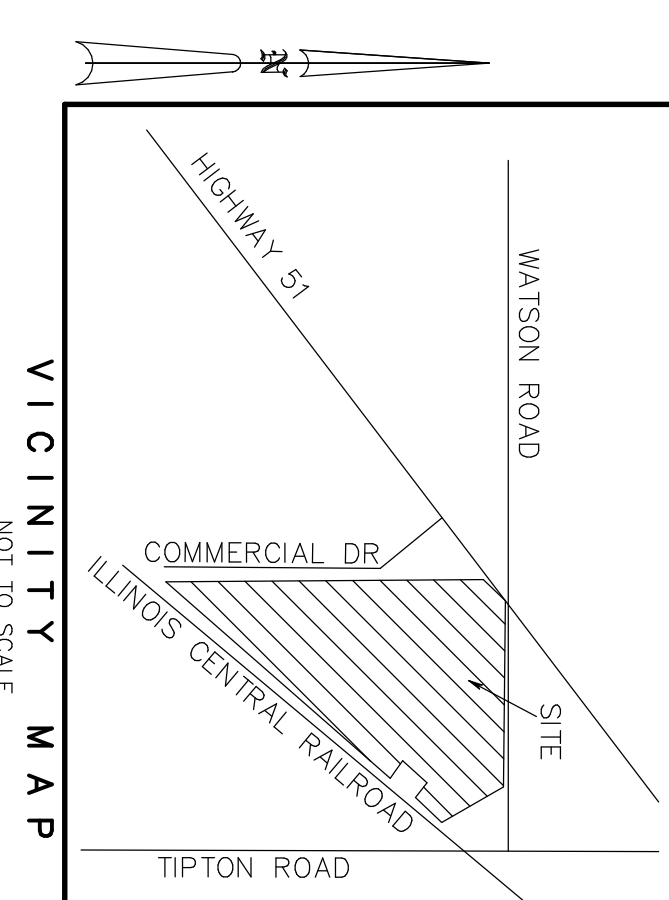


SHEET 1 OF 1  
 PRELIMINARY PLAT  
**WALLACE ESTATES**  
**PFMT HOLDINGS, LLC**

ATOKA, TENNESSEE  
 +/- 53 ACRES  
**W. H. PORTER CONSULTANTS, PLLC**  
 ENGINEERS, PLANNERS  
 SURVEYORS, CONSULTANTS  
 605 PRIMACY PARKWAY, SUITE 115  
 MEMPHIS, TENNESSEE 38119  
 (901) 585-9545

CERTIFICATE OF APPROVAL FOR SUBDIVISION AND STREET NAMES  
 DO HEREBY CERTIFY THAT I HAVE REVIEWED THE PROPOSED SUBDIVISION AND CERTIFY THAT THE SUBDIVISION AND/OR NAME(S) OF THE STREET(S) WITHIN THIS PROPOSED SUBDIVISION DO NOT CONFLICT WITH OTHER SUBDIVISIONS AND STREET NAMES FOR EMERGENCY SERVICE PURPOSES.

DATE: \_\_\_\_\_ DIRECTOR OF 911 ADDRESSING



SCALE: 1" = 100' DATE: OCTOBER 30, 2018